



[www.gpegroup.com](http://www.gpegroup.com)

## ABOUT US

### More than 20 years' experience in the concrete industry:

GPE's prime objectives are simply "to provide our clients in the concrete industry a complete range of plants and components together with our excellent after sales services".

The recruitment of a combination of high-experienced staff and reliable partners enabled GPE to quickly confirm itself as a leading and well-known supplier for batching plants and components in the Middle East.

Together with our unique control system WEBcon we provide the perfect combination to produce all type of concrete.

Today many companies in the Readymix and Precast industry are utilizing the GPE product range.

GPE has established close relationships with leading manufacturers and suppliers for all kind of components for the concrete industry.

All our experience is for the benefit of our customers.

What separates GPE from its competitors is the ability to be fair, clear, and honest with our customers.

## OUR SUCCESS

- More than 20 years in the concrete industry.
- Turn-key projects.
- Innovation force.
- Quality assurance.
- Cooperation with high quality suppliers.
- Customer service - prompt, reliable, competent.

## OUR BUSINESS

- Batching plants, stationary and mobile.
- Concrete Pumps.
- WEBCon computer system.
- Silos and Silo equipments.
- Twin and shaft and planetary mixers.
- Cement screws.
- Moisture sensors.
- Load cells.
- Spare parts and service .

## BATCHING PLANTS

GPE offers the complete range of batching plants for the Readymix and Precast industry starting with a capacity of 30 cbm/h up to 300 cbm/h.

All plant types are available like horizontal or tower plants, plants with wet and dry output leg and also fully mobile plants for easy erection and dismantling.

**NO MATTER IF READYMIX  
OR PRECAST WE HAVE  
THE RIGHT SOLUTION.**





# WEBCON DOSING SOFTWARE

complete visualisation of the production process.

With WEBCon we provide the most advanced control system in the market. The fully webbased system is used in lots of batching plants producing concrete for many prestigious projects.

WEBCon is a network capable batch management based on client –server-structure and MICROSOFT SQL server.

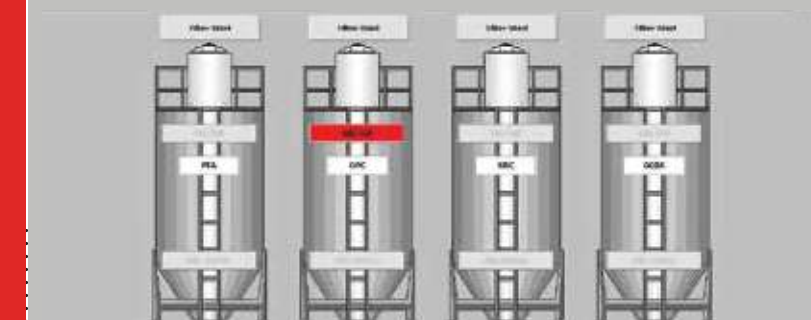
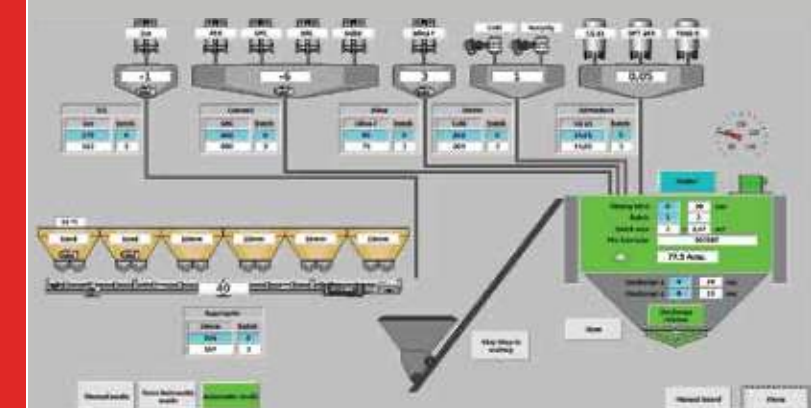
## WEBCON BENEFITS

- Complete visualization of the production process.
- Complete production at a glance.
- Easy linking of batching plants via internet explorer.
- Supervision and control of all plants direct from head office with explorer.
- Production optimization and cost reduction, increased capacity.
- Easy linking to ERP systems.
- Service and maintenance direct via internet.
- Preventive Maintenance.

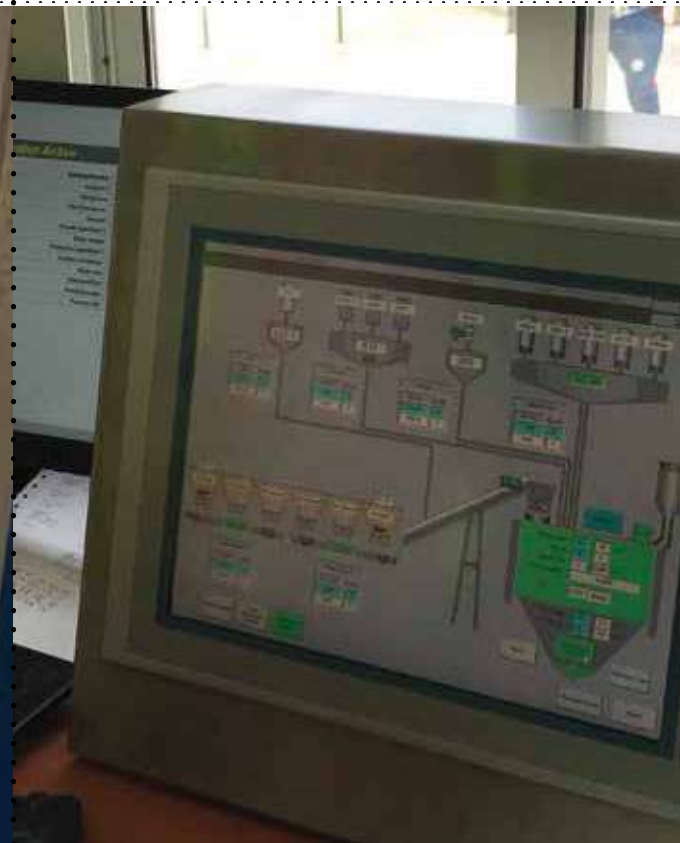


## SOFTWARE INCLUDES

- Recipe database
  - Customer database
  - Truck database
  - Components database
  - Automatic moisture correction
  - Consumption statistics
  - Alarm management
  - Password user administration
  - Free selectable plant parameter
  - Backup-functions
  - Delivery note printout according to your demands
- And much more....



Aggregate	Cement	Silica
40	-6	3
Empty Standstill Tara	Empty Standstill Tara	Empty Standstill Tara
Water	Admixture	ICI
1	0,05	-1
Empty Standstill Tara	Empty Standstill Tara	Empty Standstill Tara





## GPE 120SM-6-4-1-G

Semimobile batching plant 120cbm/hr.  
Fully galvanized  
Aggregate storage 6 x 40cbm  
BHS twin shaft mixer DKXS 3.0  
4 Cement silos 200T each  
Microsilica silo 60T  
WEBCon control system





## GPE EUROMIX 120

Fully mobile batching plant 120cbm/hr.  
Aggregate storage 4 x 30cbm  
BHS twin shaft mixer DKXS 3.0  
3 Cement silos 150T each  
Microsilica silo 60T  
WEBCon control system





## GPE 120-6-4-1-G

Stationary batching plant 120cbm/hr.  
Fully galvanized  
Aggregate storage 6 x 40cbm  
Sicoma twin shaft mixer MAO4500  
4 Cement silos 200T each  
Microsilica silo 60T  
WEBCon control system





## GPE 3000-4-2

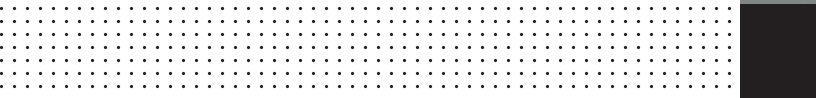
Stationary batching plant 70cbm/hr.  
Aggregate storage 4 x 30cbm  
Sicoma Planetary mixer P3000  
2 Cement silos 80T each  
Microsilica silo 60T  
WEBCon control system





## GPE 160-6-4-DRY

GPE 160-6-4-DRY  
Stationary batching plant 160cbm/hr.  
Aggregate storage 5 x 40cbm  
Twin shaft mixer 4,5cbm output  
Dry output leg  
4 Cement silos 300T each  
WEBCon control system







## GPE 60-4-4

Stationary batching plant 60cbm/hr.  
Aggregate storage 4 x 20cbm  
Sicoma twin shaft mixer MAO1875  
4 Cement silos 70T each  
WEBCon control system



## GPE 120-6-3-1-G

Stationary batching plant 120cbm/hr.  
Fully galvanized  
Aggregate storage 6 x 40cbm  
BHS twin shaft mixer DKXN 3.0  
3 Cement silos 300T each  
Microsilica silo 60T  
WEBCon control system

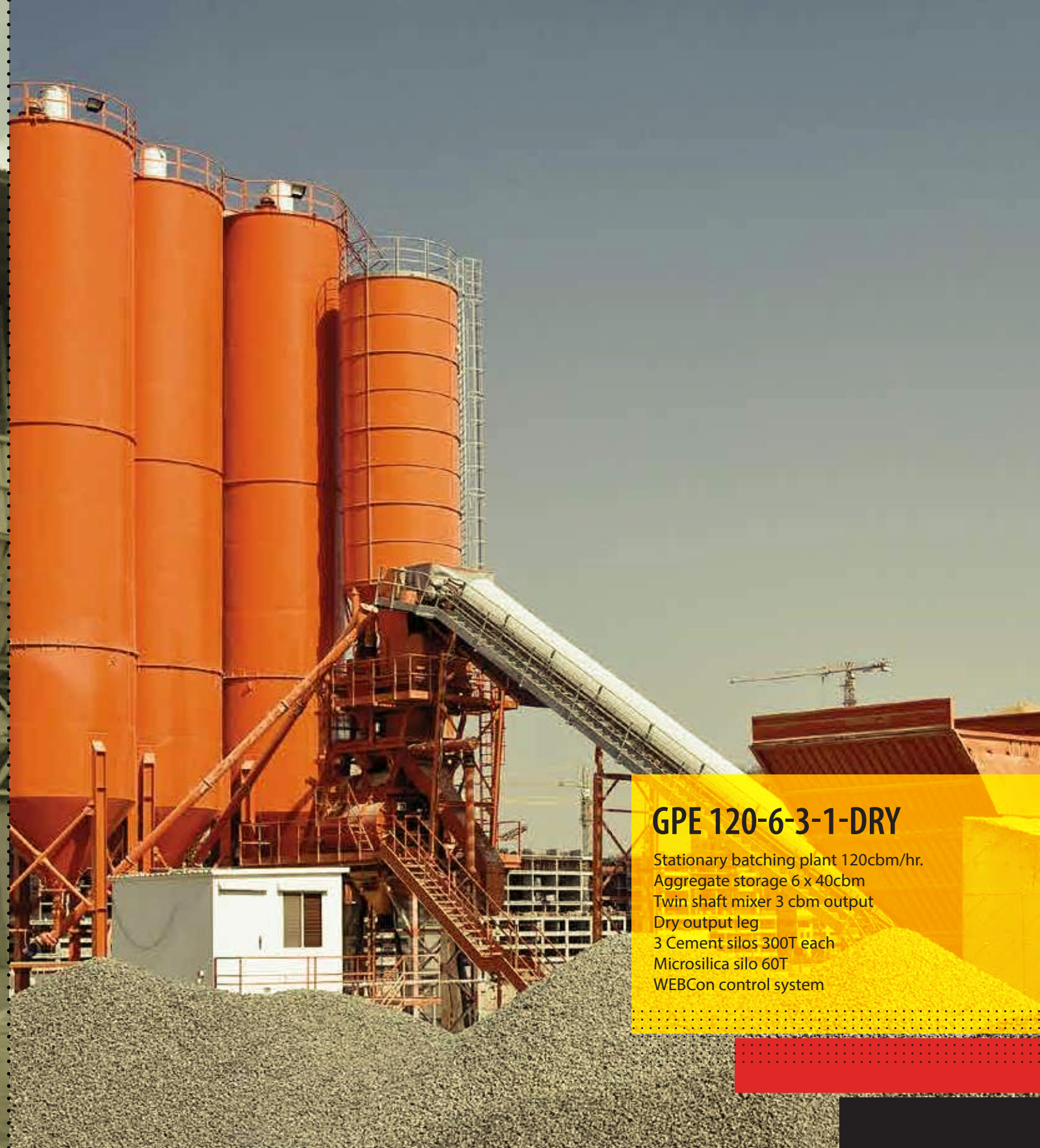






## GPE 120-6-4-1

Stationary batching plant 160cbm/hr.  
Aggregate storage 6 x 40cbm  
Sicoma twin shaft mixer MAO6750  
4 Cement silos 300T each  
Microsilica silo 60T  
WEBCon control system



## GPE 120-6-3-1-DRY

Stationary batching plant 120cbm/hr.  
Aggregate storage 6 x 40cbm  
Twin shaft mixer 3 cbm output  
Dry output leg  
3 Cement silos 300T each  
Microsilica silo 60T  
WEBCon control system







## GPE 120-6-3-1-G

Stationary batching plant 120cbm/hr.  
Fully galvanized  
Aggregate storage 6 x 40cbm  
BHS twin shaft mixer DKXS 3.0  
3 Cement silos 150T each  
Microsilica silo 60T  
WEBCon control system



## GPE 3000-4-2

Stationary batching plant 70cbm/hr.  
Aggregate storage 4 x 60cbm  
Sicoma Planetary mixer P3000  
2 Cement silos 80T each  
WEBCon control system





## AFTER SALES SERVICE

Customer service is a core expertise of sales activities at GPE.

We consider employees with the best training possible to be an investment that guarantees effective technical support. Continuous availability of all plants and systems is essential for every day operation.

## 24 HOURS SERVICE SUPPORT

The GPE service team can be contacted 24 hours a day for expert advice on all plants or mixer problems. You can rely on GPE to provide expert technical assistance at whatever time of day or night you have a downtime problem.

## REPAIRS

Our service teams, who can tackle any technical problem, guarantee fast expert assistance in case of repair, helping to significantly shorten your downtimes.

## SPARE PARTS SERVICE

GPE has a large stock of spare parts which will reach you in the shortest possible time.



ALWAYS ONE STEP  
AHEAD ...





### **Germany**

German Plant Experience GmbH  
69429 Unterdielbach  
Phone: +49 6271 94 59 01  
Fax: +49 6271 94 59 02  
Email: [info@gpe-gmbh.com](mailto:info@gpe-gmbh.com)

### **Middle East**

German Plant Experience L.L.C.  
P.O. Box 182234  
DUBAI  
Phone: +971 4 25 89 200  
Fax: +971 4 25 89 201  
Email: [info@gpegroup.com](mailto:info@gpegroup.com)

### **Italy**

German Plant Experience s.r.l.  
41051 Castelnovo Rangone (MO)  
Phone: +39 059 53 12 08  
Fax: +39 059 53 23 78  
Email: [italy@gpegroup.com](mailto:italy@gpegroup.com)

### **Australia**

German Plant Experience Pty Ltd.  
Melborne VIC 3000  
Phone: +61 3 90 78 77 66  
Fax: +61 3 90 78 77 87  
Email: [akash@gpegroup.com.au](mailto:akash@gpegroup.com.au)  
WEB: [www.gpegroup.com.au](http://www.gpegroup.com.au)

